

# Fused Millefiori Pendant

*Design, Fabrication, and Text by Melanie Churchill*

**M**illefiori is a sparkling Italian word that means “millions of flowers,” and that’s exactly what this pendant will remind you of—a collection of colorful blossoms. When finished, it will be a 1-1/2" circle. This stunning pendant should lift your spirits every time you see it for many years to come.

## Step 1

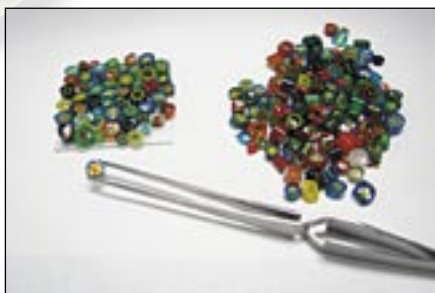
*Cut the clear 90 COE glass.*



Always wear safety glasses when cutting or grinding glass. You will need a 2" square to use as a base for the millefiori.

## Step 2

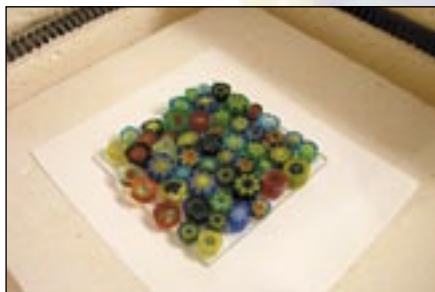
*Arrange the millefiori on the glass.*



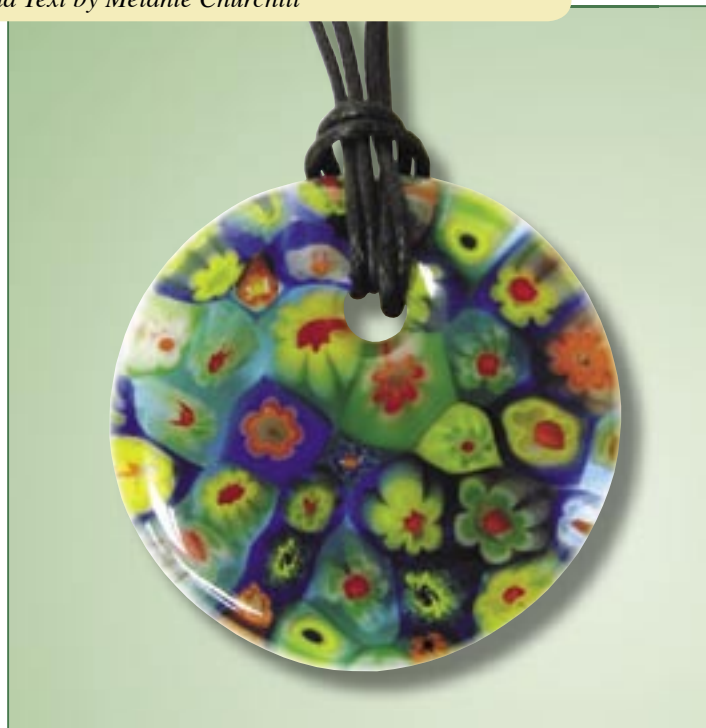
Using tweezers, set the millefiori on top of the clear glass base, placing them as closely together as you can.

## Step 3

*Place the project in the kiln.*



Set the project on top of a prepared kiln shelf. To prevent the glass from sticking, you can use shelf wash or shelf paper for this step.



## 90 COE Glass

Millefiori Assortment, 2 oz.

Clear Glass for Base, Scrap

## Other Materials Required

Glass Cutter Running Pliers

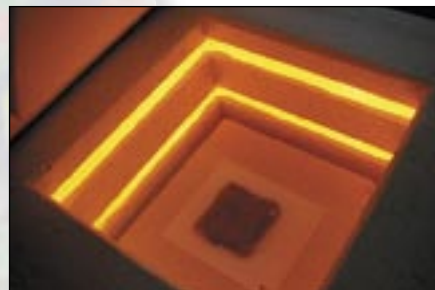
Glass Saw Glass Grinder with 1/4" Bit

Kiln Shelf Wash or Paper

Safety Glasses Tweezers

## Step 4

*Full-fuse the pendant.*



Refer to the glass firing schedule for this step.

## Bead & Jewelry Articles Featured in — Glass Patterns Quarterly —

Now Available  
on CD



All of the projects are  
written by leading bead  
and jewelry artists and  
industry experts.

Ask Your Supplier or Visit  
**www.GlassPatterns.com**



**GLASS PATTERNS**  
— Q U A R T E R L Y —  
PO Box 69 • Westport, KY 40077  
800-719-0769 or 502-222-5631  
Fax: 502-222-4527

### Step 5

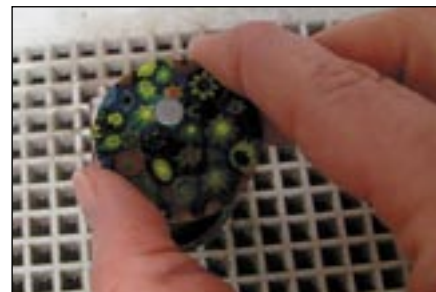
*Use a glass saw  
to cut the glass tile.*



Trace a 1-1/2" circle onto the top of the fused glass tile. Following your line, use a glass saw to cut out your pendant shape. You can touch up the glass with a grinder to make it a more perfect circle if needed.

### Step 6

*Use a 1/4" grinder  
bit to drill a hole  
in the glass.*



To create an opening in the pendant, hold the glass against the grinder bit at an angle to start the hole. Once a groove is started, you can hold the glass parallel to the grinder bit and apply pressure until you have completely drilled through. Remember to wet the back of your piece and grinder bit with a wet sponge periodically. This not only prevents cracking, but it also prevents glass powder from becoming airborne.

### Step 7

*Round the edges  
of the pendant.*



Once the glass is shaped the way you want it, clean the ground edges with soap and water using a soft brush. (I like to use a tooth brush.) Rinse thoroughly and pat dry. Place on top of a prepared kiln shelf and refire to round the edges of the pendant. Refer to the glass firing schedule for this step. Note: You can modify the fusing schedule by going to a lower temperature to achieve a crisp fire-polished edge instead of the rounded edges that the full-fuse produces.

**GPO**

#### **Firing Schedule\***

500°F/hour to 960°F and hold 5 minutes  
Full to 1460°F and hold 10 minutes  
Full to 960°F and hold 5 minutes  
Let cool to room temperature  
\* Firing temperatures and times are  
approximate, since all kilns are different.

© Copyright 2010 by Glass Patterns Quarterly.  
All rights reserved.